



Proposed Relocation of Canterbury Steiner School

11th November 2011



The Need to Relocate



Existing and proposed sites



The Future Vision for The School

PHASE ONE

Short Term

- Secure planning permission for the relocation
- Restore Oak House to match existing School accommodation.
- To relocate existing school to Oak House, St Augustine's.

Medium Term

- Develop a sustainable support program, anticipating further cuts in government funding and future financial difficulties for parents in meeting the costs of the curriculum.

PHASE TWO

Short term

- Restoration of Beech House, Juniper House and Redwood House, to accommodate the full Arts and Life Skills programs.
- Promotion of more inclusive community participation and local employment opportunities.

Long Term

- Realising the School's ambition to entertain the ideas and creative visions of the local community in making this an asset for the mutual benefit of all, now and into the future.



The Need to Relocate – existing School



The Existing School

- 201 pupils between the ages of 3 and 17.
- 21 full time staff, 13 part time + various others
- Cost of maintaining existing premises
- Not financially sustainable to continue on the current site with these constraints.
- Some classrooms require upgrading
- Curriculum greatly limited as a result





The Relocation Site



Oak House - Background

- Built for spinal injury patients.
- Single storey with central portion two storey.
- Constructed of red brick with orange pantiles
- Currently boarded, vandalised and is in very poor condition.
- Allocated for mixed-use since 1998
- Current policy safeguards the site for business / leisure – primarily for employment.
- Acceptable range includes :

*Professional and financial services, offices, research and development, hotel, hospital, nursing home, **education**, training centre, dance, sports halls, skating rinks, gymnasium, other indoor and outdoor sports and leisure uses.*

- Re-use existing buildings without increasing built footprint
- Minimize impacts on biodiversity and landscape



The Relocation Site



Advantages of the Proposed Site

- It is more sustainably located than the existing school site, being closer to public transport links and integrated within Chartham.
- It will allow the school to plan for the long term with room to grow with the redevelopment of the other buildings on the site.





Proposed Conversion of Oak House





Proposed facilities for Oak House



Proposed conversion of Oak House to provide:

- Modern learning facilities
- Dedicated Kindergarten, Main School and Sixth Form College
- Rooms for dual use as a theatre
- Play Area/Sports Pitches
- Area for animal husbandry
- Parking and drop off/pick up areas
- No immediate School expansion
- Increased community use
- Expanded outreach programme
- More sustainable support program
- Long term the school wishes to entertain ideas and visions of our neighbours to make this an asset for the mutual benefit of all.



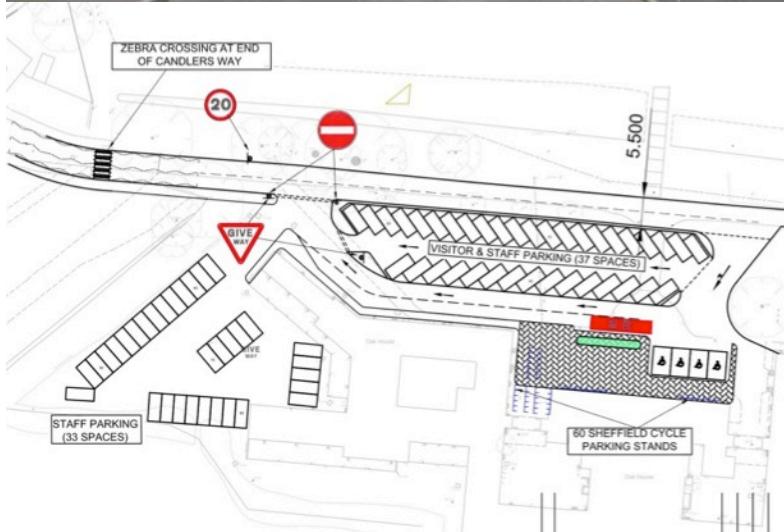
Traffic Assessment and proposals



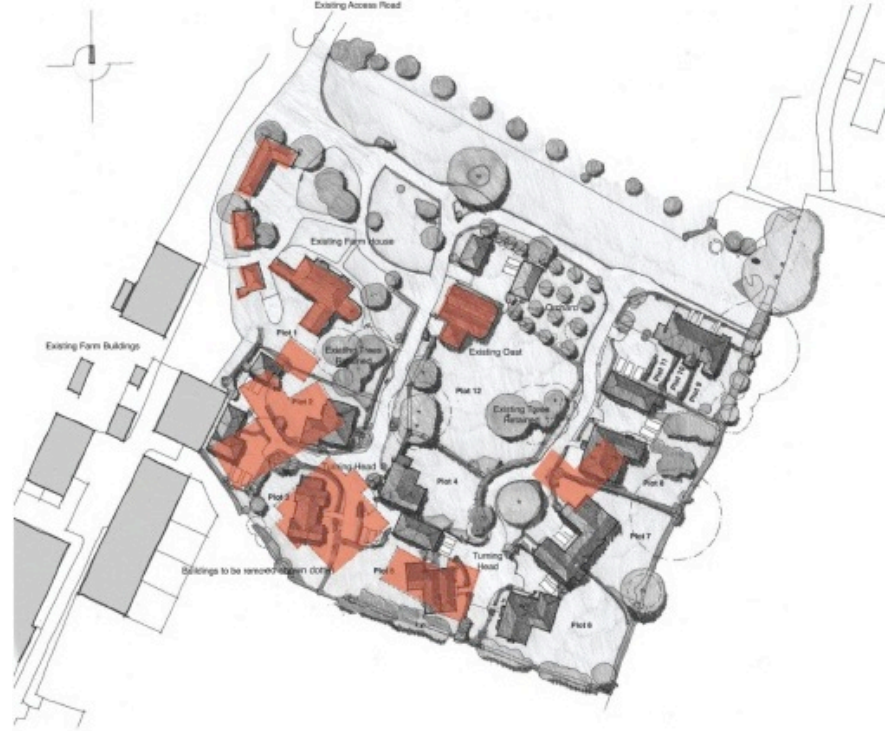
- Agreement with the Highway Authority
- Ensuring local, regional and national sustainable transport policies complied with
- Lower traffic uses than Hotel or Offices
- Effective use of local highway network, and taking account of set-down/pick-up activities.

Transport Assessment Demonstrates:

- Network can accommodate proposals – for both sites
- Proposed set-down/pick-up and parking is adequate
- Parking on surrounding streets unlikely because of set down pick up facility
- More accessible and sustainable location
- Less reliance on private car transport
- Travel Plan to monitor effectiveness of parking and use



Proposed 'Enabling' Development



Why is enabling development required?

- To fund the refurbishment of Oak House to provide modern and energy efficient facilities
- To provide the minimum funding needed to relocate school

Quantity and Design of the Enabling Housing

- Same built footprint as existing buildings
- 10 new family homes in vernacular style
- Together with restoration of Manor & Oast
- Layout respects landscape sensitivity



Proposed 'Enabling' Development

